



**REGIONAL SPECIALISED METEOROLOGICAL CENTRE-TROPICAL CYCLONES, NEW DELHI  
SPECIAL TROPICAL WEATHER OUTLOOK**

**DEMS-RSMC TROPICAL CYCLONES NEW DELHI DATED 02.08.2023**

**SPECIAL TROPICAL WEATHER OUTLOOK FOR NORTH INDIAN OCEAN (THE BAY OF BENGAL AND THE ARABIAN SEA) VALID FOR NEXT 168 HOURS ISSUED AT 1500 UTC OF 02.08.2023 BASED ON 1200 UTC OF 02.08.2023.**

**(1) DEEP DEPRESSION WEAKENED INTO A DEPRESSION OVER JHARKHAND**

THE DEEP DEPRESSION OVER GANGETIC WEST BENGAL AND ADJOINING JHARKHAND MOVED WESTWARDS WITH A SPEED OF 20 KMPH DURING PAST 6 HOURS, WEAKENED INTO A DEPRESSION OVER JHARKHAND AND LAY CENTRED AT 1200 UTC OF 02<sup>ND</sup> AUGUST, 2023 NEAR LATITUDE 23.3°N AND LONGITUDE 85.1°E, ABOUT 20 KM WEST-SOUTHWEST OF RANCHI (JHARKHAND, 42701) AND 190 KM EAST-NORTHEAST OF AMBIKAPUR (42693, CHHATTISGARH).

IT IS LIKELY TO MAINTAIN THE INTENSITY OF DEPRESSION TILL 3<sup>RD</sup> AUGUST MORNING AND WEAKEN INTO A WELL MARKED LOW PRESSURE AREA THEREAFTER. IT IS LIKELY TO MOVE WEST-NORTHWESTWARDS TOWARDS NORTHEAST MADHYA PRADESH AND ADJOINING SOUTHEAST UTTAR PRADESH ACROSS NORTH CHHATTISGARH DURING NEXT 12 HOURS.

FORECAST TRACK AND INTENSITY ARE GIVEN IN THE FOLLOWING TABLE:

DATE/TIME (UTC)	POSITION (LAT. °N/ LONG. °E)	MAXIMUM SUSTAINED SURFACE WIND SPEED (KMPH)	CATEGORY OF CYCLONIC DISTURBANCE
02.08.23/1200	23.3/85.1	45-55 GUSTING TO 65	DEPRESSION
02.08.23/1800	23.3/84.0	40-50 GUSTING TO 60	DEPRESSION
03.08.23/0000	23.4/82.9	35-45 GUSTING TO 55	DEPRESSION
03.08.23/0600	23.5/81.8	30-40 GUSTING TO 50	WELL MARKED LOW PRESSURE AREA

ASSOCIATED SCATTERED TO BROKEN LOW AND MEDIUM CLOUDS WITH EMBEDDED INTENSE TO VERY INTENSE CONVECTION LAY OVER SOUTH JHARKHAND, ODISHA AND NORTH BAY OF BENGAL (BOB) & NEIGHBOURHOOD. MINIMUM CLOUD TOP TEMPERATURE IS MINUS 93 DEGREE CELSIUS.

ASSOCIATED MAXIMUM SUSTAINED WIND SPEED IS 25 KNOTS GUSTING TO 35 KNOTS. ESTIMATED CENTRAL PRESSURE IS 990 HPA.

**(2) BAY OF BENGAL:**

SCATTERED TO BROKEN LOW AND MEDIUM CLOUDS WITH EMBEDDED INTENSE TO VERY INTENSE CONVECTION LAY OVER GULF OF MARTABAN. SCATTERED LOW & MEDIUM CLOUDS WITH EMBEDDED MODERATE TO INTENSE CONVECTION LAY OVER NORTH 7 CENTRAL BOB AND ANDAMAN SEA.

**PROBABILITY OF CYCLOGENESIS (FORMATION OF DEPRESSION) DURING NEXT 168 HRS:**

24 HOURS	24-48 HOURS	48-72 HOURS	72-96 HOURS	96-120 HOURS	120-144 HOURS	144-168 HOURS
NIL	NIL	NIL	NIL	NIL	NIL	NIL

**(3) ARABIAN SEA:**

SCATTERED LOW AND MEDIUM CLOUDS WITH EMBEDDED ISOLATED WEAK TO MODERATE CONVECTION LAY OVER EAST ARABIAN SEA AND LAKSHADWEEP ISLANDS AREA.

**PROBABILITY OF CYCLOGENESIS (FORMATION OF DEPRESSION) DURING NEXT 168 HRS:**

24 HOURS	24-48 HOURS	48-72 HOURS	72-96 HOURS	96-120 HOURS	120-144 HOURS	144-168 HOURS
NIL	NIL	NIL	NIL	NIL	NIL	NIL

**REMARKS:**

THE LOW LEVEL VORTICITY IS AROUND  $150 \times 10^{-6} \text{S}^{-1}$  TO THE SOUTHEAST OF SYSTEM CENTER AND VERTICALLY IT IS EXTENDING UPTO 200 HPA LEVEL. LOW LEVEL CONVERGENCE IS ABOUT  $20 \times 10^{-5} \text{S}^{-1}$  AROUND THE SYSTEM CENTRE. UPPER LEVEL DIVERGENCE IS AROUND  $20 \times 10^{-5} \text{S}^{-1}$  TO THE SOUTH-SOUTHEAST OF SYSTEM CENTRE. VERTICAL WIND SHEAR IS LOW TO MODERATE (10-15 KNOTS) AROUND SYSTEM AREA AND ALONG EXPECTED TRACK. THE SYSTEM IS IN FAVOURABLE ENVIRONMENT AND IS LIKELY TO MAINTAIN IT'S INTENSITY OF DEPRESSION DURING NEXT 12 HOURS AND WEAKEN THEREAFTER.

VARIOUS DETERMINISTIC MODELS ARE INDICATING WEST-NORTHWESTWARDS MOVEMENT OF THE SYSTEM TILL 3<sup>RD</sup>/0000 UTC.

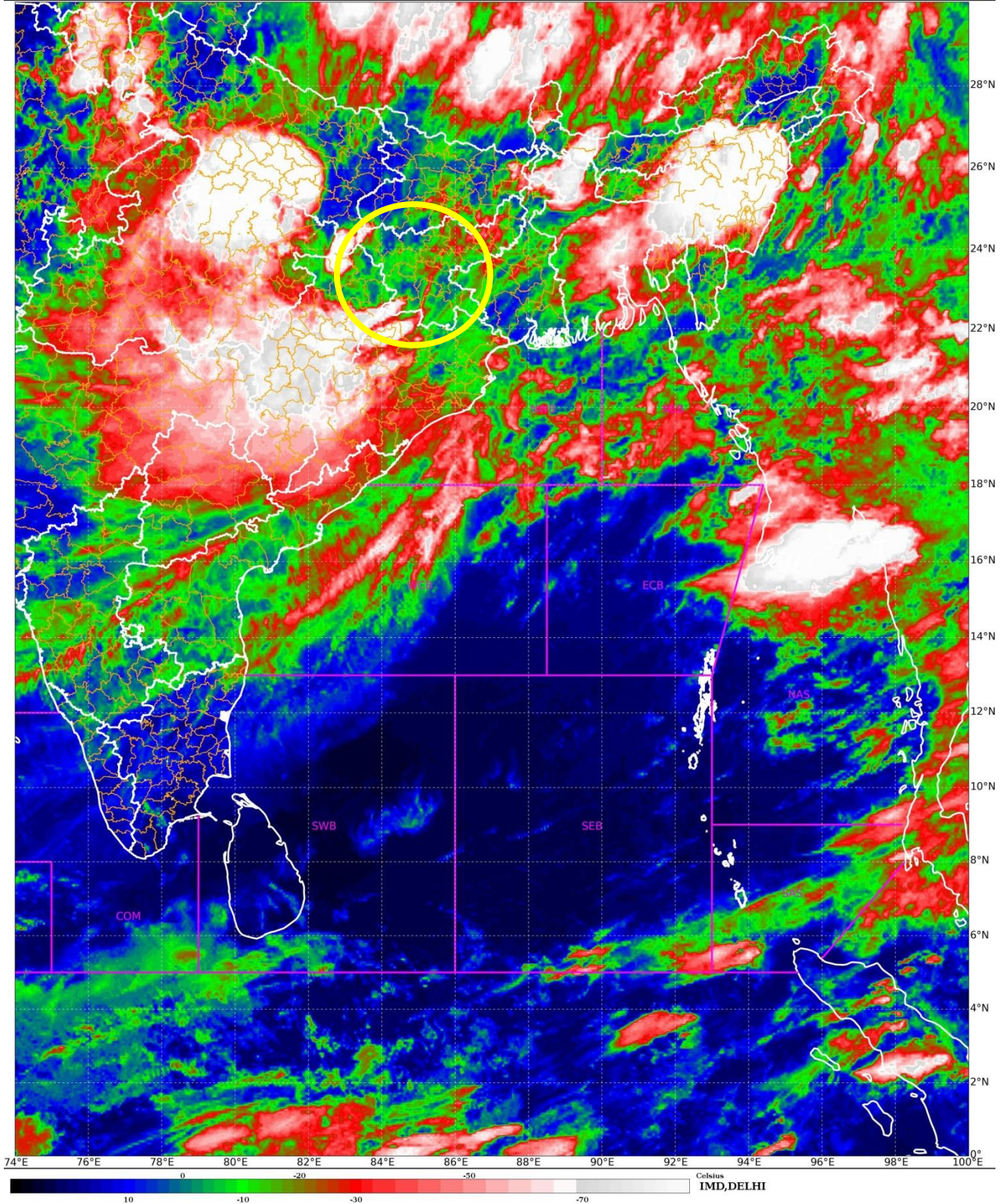
HENCE, IT IS INFERRED THAT THE DEPRESSION OVER JHARKHAND IS LIKELY TO MAINTAIN IT'S INTENSITY TILL 3<sup>RD</sup> AUGUST MORNING AND WEAKEN INTO A WELL MARKED LOW PRESSURE AREA THEREAFTER. IT IS LIKELY TO MOVE WEST-NORTHWESTWARDS TOWARDS NORTHEAST MADHYA PRADESH AND ADJOINING SOUTHEAST UTTAR PRADESH ACROSS NORTH CHHATTISGARH DURING NEXT 12 HOURS

**(M. SHARMA)**  
**SCIENTIST-D**  
**RSMC, NEW DELHI**

# Depression (23.3°N, 85.1°E)

SAT : INSAT-3D IMG  
IMG\_TIR1\_TEMP 10.8 um  
L1C Mercator

02-08-2023/(1400 to 1426) GMT  
02-08-2023/(1930 to 1956) IST



Cloud distribution: (a) Isolated: <25%, Scattered:25-50%, Broken: 51-75%, Solid:>75%, Convection Intensity: (a) Weak: Cloud Top Temperature (CTT) >-25°C, (b) Moderate: CTT: - 25°C to -40°C, (c) Intense: CTT: - 41°C to -70°C and (d) Very Intense: : Less than -70°C

PROBABILITY OF CYCLOGENESIS (FORMATION OF DEPRESSION):NIL: 0%, LOW: 1-33%, , MODERATE: 34-66% AND HIGH: 67-100%

This is a guidance Bulletin for WMO/ESCAP Panel Member countries. Visit respective National websites for Country specific Bulletins



# OBSERVED AND FORECAST TRACK OF DEPRESSION OVER JHARKHAND BASED ON 1200 UTC (1730 IST) OF 02<sup>ND</sup> AUGUST 2023.

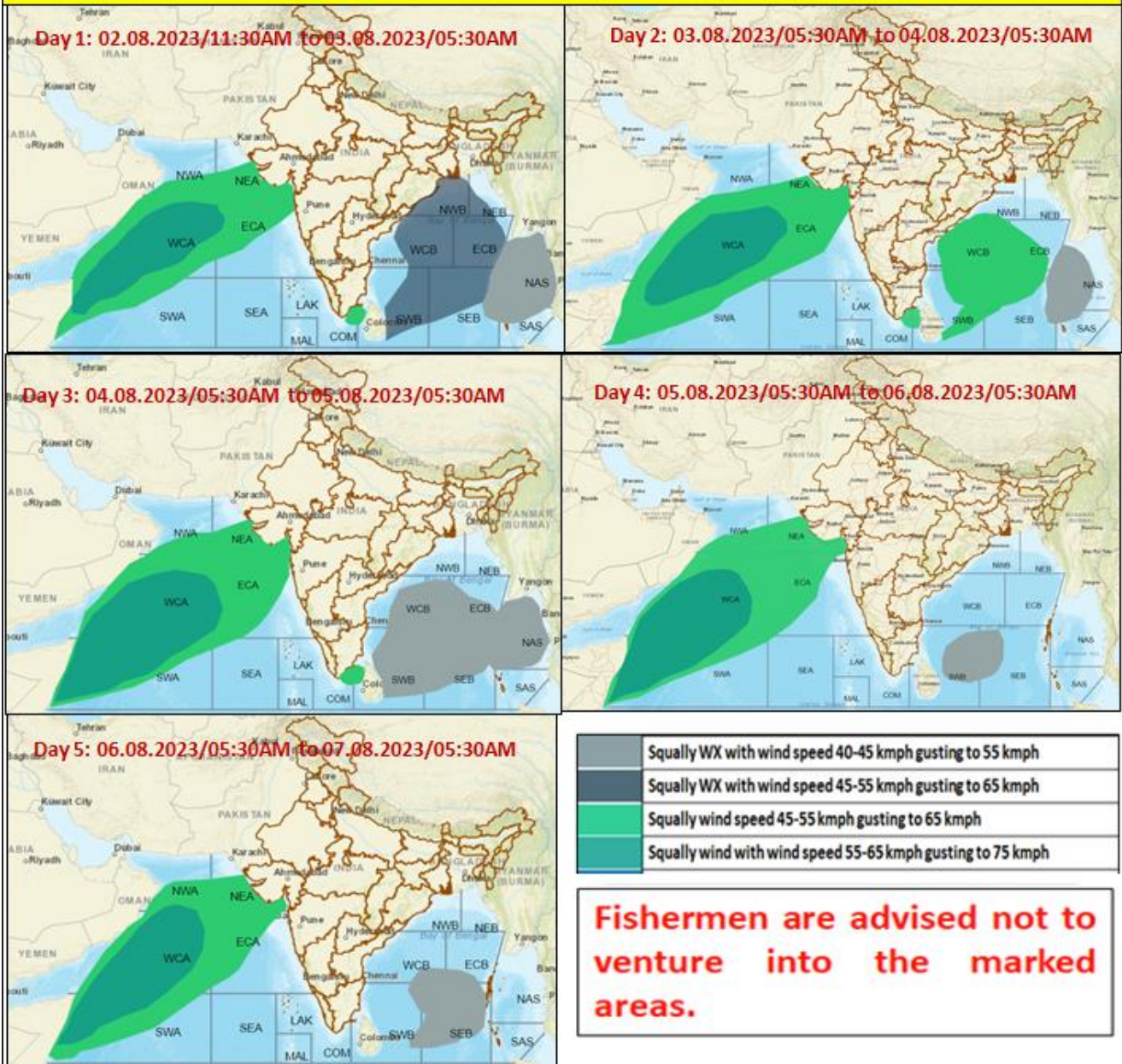


DATE/TIME IN UTC  
 IST=UTC + 0530  
 L: LOW PRESSURE AREA  
 WML: WELL MARKED LOW PRESSURE AREA  
 D: DEPRESSION (17-27 KT)  
 DD: DEEP DEPRESSION (28-33 KT)  
 CS: CYCLONIC STORM (34-47 KT)  
 SCS: SEVERE CYCLONIC STORM (48-63KT)  
 VSCS: VERY SEVERE CYCLONIC STORM (64-89 KT)  
 ESCS: EXTREMELY SEVERE CYCLONIC STORM (90-119 KT)  
 SuCS: SUPER CYCLONIC STORM ( $\geq$  120 KT)

- LESS THAN 34 KT
- 34-47 KT
- $\geq$  48 KT
- OBSERVED TRACK
- FORECAST TRACK
- CONE OF UNCERTAINTY

Cloud distribution: (a) Isolated: <25%, Scattered:25-50%, Broken: 51-75%, Solid:>75%, Convection Intensity: (a) Weak: Cloud Top Temperature (CTT) >-25°C, (b) Moderate: CTT: - 25°C to -40°C, (c) Intense: CTT: - 41°C to -70°C and (d) Very Intense: : Less than -70°C  
 PROBABILITY OF CYCLOGENESIS (FORMATION OF DEPRESSION):NIL: 0%, LOW: 1-33%, , MODERATE: 34-66% AND HIGH: 67-100%  
 This is a guidance Bulletin for WMO/ESCAP Panel Member countries. Visit respective National websites for Country specific Bulletins

## Fishermen warning graphics



Cloud distribution: (a) Isolated: <25%, Scattered:25-50%, Broken: 51-75%, Solid:>75%, Convection Intensity: (a) Weak: Cloud Top Temperature (CTT) >-25°C, (b) Moderate: CTT: - 25°C to -40°C, (c) Intense: CTT: - 41°C to -70°C and (d) Very Intense: : Less than -70°C  
 PROBABILITY OF CYCLOGENESIS (FORMATION OF DEPRESSION):NIL: 0%, LOW: 1-33%, , MODERATE: 34-66% AND HIGH: 67-100%  
 This is a guidance Bulletin for WMO/ESCAP Panel Member countries. Visit respective National websites for Country specific Bulletins